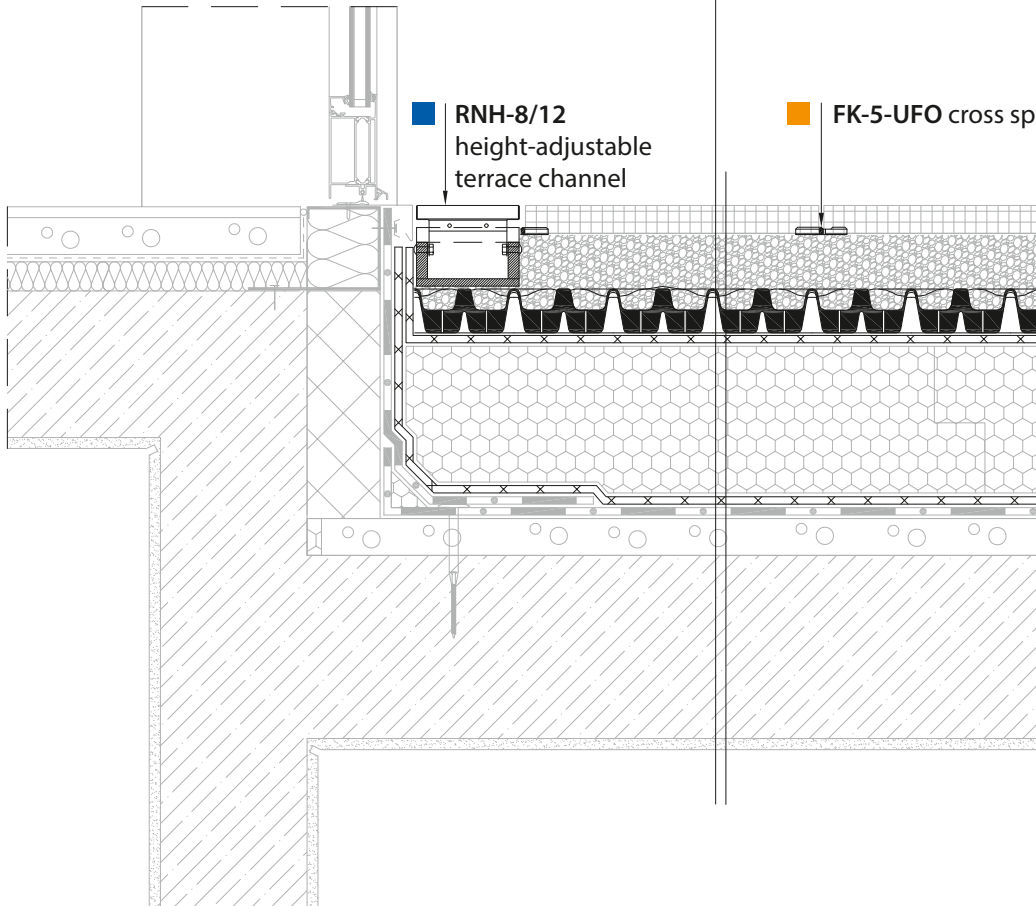




- frost-proof pavement (with **FK-5-UFO** cross spacer)
- crushed stone bedding
- **DIADEM® DiaDrain-60H-UP** drainage board filled
- **DIADEM®VLF-110** separating geotextile
- closed cell thermal insulation
- **DIADEM® FLW-400** protection geotextile
- (root-resistant) waterproofing membrane
- additional layers



■ **RNH-8/12**  
height-adjustable  
terrace channel

■ **FK-5-UFO** cross spacer

0 10 50 cm